

Year 5 – Spring 2 and Summer 1 Knowledge Organiser

Geography: Human and Physical: Coasts



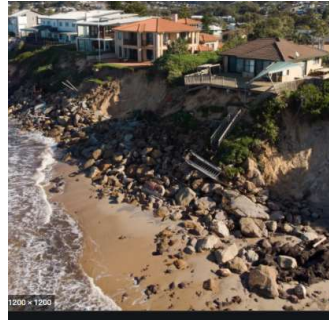
Heathfield Schools' Partnership

In this topic, the children will continue to learn key topographical features and land use patterns. They will look at how a location can change over time and the changes in land use. The children will carry out a longshore drift fieldwork study and collect data whilst they visit the Isle of Wight.

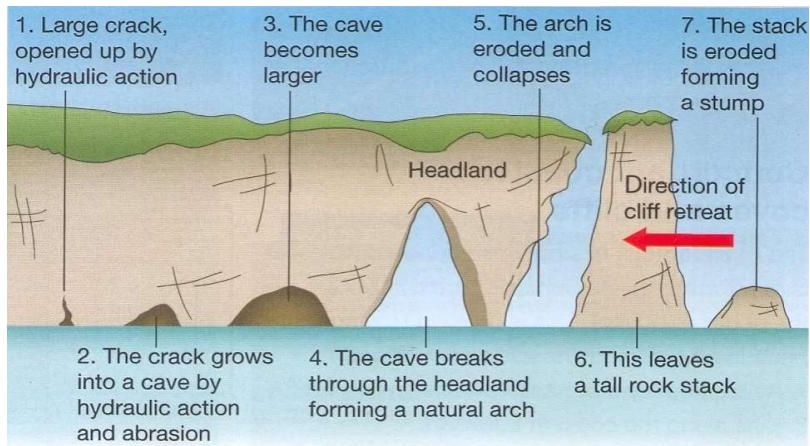
Also as part of the topic, the children will observe human and physical features using case studies: **Isle of Wight Coasts and Coasts of Southern USA**

What you should already know

- Observe and describe simple human and physical features and compare similarities and differences between two locations.
- Describe and understand key physical and human features of the world
- Observe, measure, record and present data using a range of methods.



Key knowledge: Understand the key physical features of coastlines and coastal erosion. Understand the impact of coastal erosion on humans and the environment.



Key Vocabulary

Coastal erosion – The wearing away of the coastline due to the force of the sea.

Hydraulic action – The sheer power of the waves as they smash against the cliff

Abrasion – The process of wearing away

Flood defences – How localities protect from rising sea levels and flooding.

Economic impact – How landscape change affects the lives of humans and their way of life.

Biomes – Areas of the planet with similar landscape, climate and animals.

Longshore drift - the movement of material along the **shore** by wave action

Groynes – a structure build perpendicular to the shore to reduce longshore drift.

Data – collected information.

